

Anti-U1 snRNP C (U1C) antibody, rat monoclonal (4H12)

70-400 100 ug

The **spliceosomal U1C protein** is critical to the initiation and regulation of precursor messenger RNA (pre-mRNA) splicing, as part of the U1 small nuclear ribonucleoprotein particle (**snRNP**). **U1C** is needed for efficient complex formation of U1 snRNP with a 5' splice site.

The antibody was produced from the hybridoma cultured in serum-free medium and purified under mild conditions by propriety chromatography processes.

Applications:

1. Western blotting
 2. Immunocytochemistry
 3. Immunohistochemistry (frozen section)
 4. ELISA
- Other applications have not been tested.

Immunogen: Recombinant GST-fused mouse U1C (full length)

Isotype: Rat IgG 2a kappa

Form: Purified monoclonal antibody (IgG) 1mg/ml in PBS, 50% glycerol, filter-sterilized

Specificity: Specific to human, simian, and mouse U1C. Other species have not been tested.

Storage: -20°C (long period, -70°C)

Data Link: Swiss-Prot [Q62241](#) (mouse), [P09234](#) (human)

References:

1. Muto Y *et al* "The structure and biochemical properties of the human spliceosomal protein U1C" *J Mol Biol* **341**: 185–198 (2004) PMID: [15312772](#)
2. Pomeranz Krummel DA *et al* "Crystal structure of human spliceosomal U1 snRNP at 5.5Å resolution" *Nature* **458**: 475-480 (2009) PMID: [19325628](#)

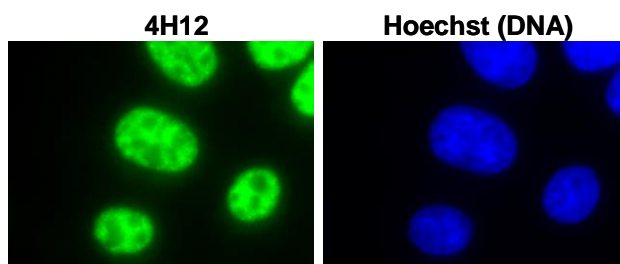


Fig.1 Immunofluorescent staining of L929 (mouse) cells with anti-U1C antibody (4H12).

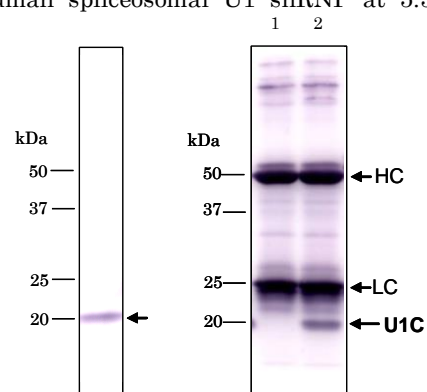


Fig.2 Detection of U1C protein in HeLa total cell extract by Western blotting with antibody 4H12.

Fig.3 Immunoprecipitation of U1C protein with 4H12. lane1: no extract lane2: HeLa total extract HC, LC ; IgG heavy & light chain